



STATE AND PERSPECTIVES OF SCIENCE AND INNOVATION DEVELOPMENT

IN THE REPUBLIC OF BELARUS

Dr. Natallia Rybianets

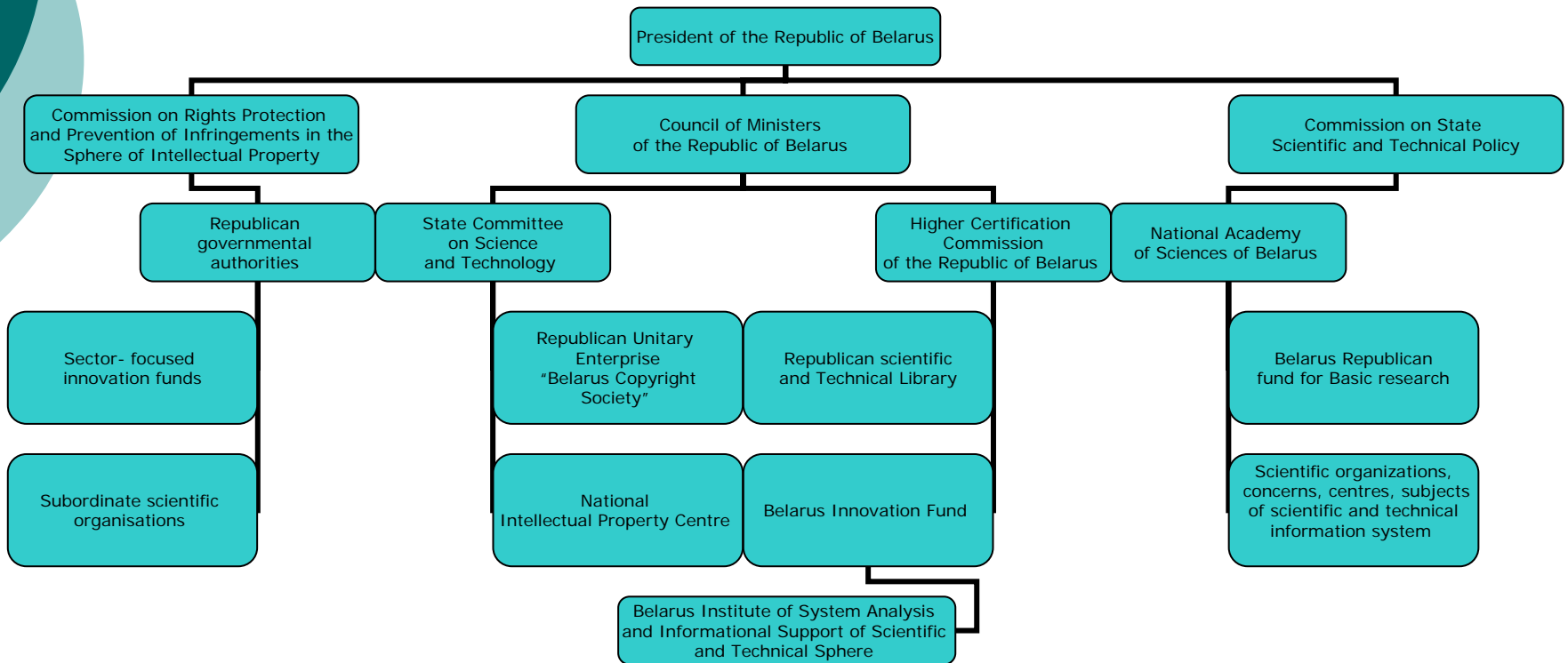
**Director, Centre for Coordination of Co-operation
with UNESCO and other International
Organisations/**

National Academy of Sciences of Belarus

Tel: +375 17 284 14 56; Fax: +375 17 284 04 81;

e-mail: mab@presidium.bas-net.by

Governmental authorities in the sphere of science and technologies in the Republic of Belarus

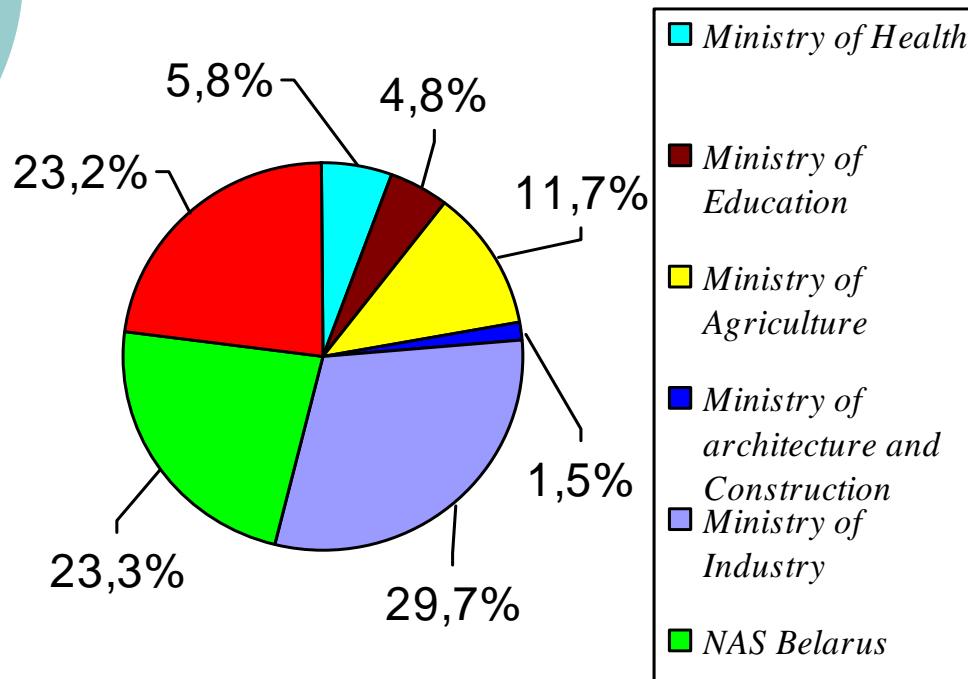


Macroeconomical indicators

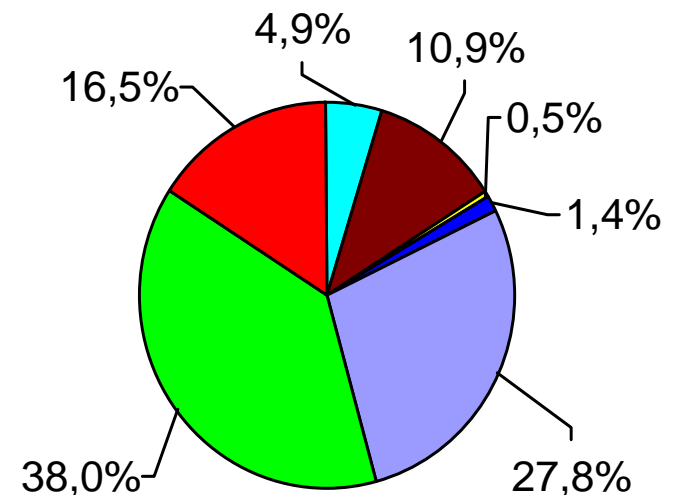
Indicators	1997	1998	1999	2000*	2001	2002	2003
State Budget financing for scientific R&D , bln. rouble	1774,2	3031,4	13521,7	36,4	67,7	90,1	137,3
Share of the State Budget financing in current domestic expenditure on scientific R&D,%	52,6	52,0	42,5	46,2	50,0	45,8	48,6
Cost of S&R equipment, bln. roubles	5623,4	12971,2	33327,1	176,7	385,5	451,7	603,2
Personal engaged in scientific R&D, thous. persons	31,5	27,4	26,1	30,2	30,5	29,6	28,5
Share of Personal engaged in scientific R&D in total personal engaged for economy,%	0,72	0,62	0,59	0,68	0,69	0,68	0,66

Indicators: Dynamics of R&D personal by sectors

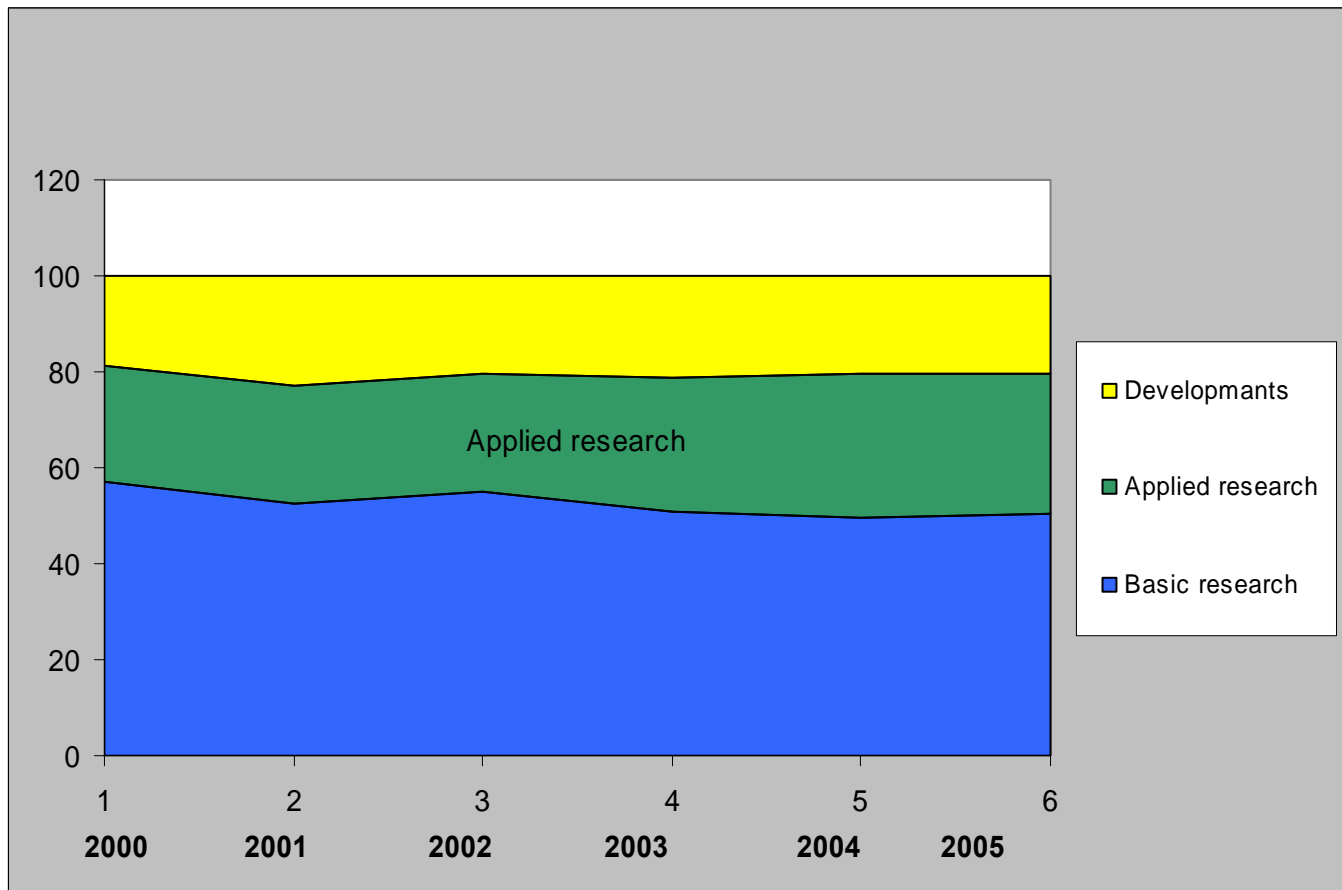
○ 1997



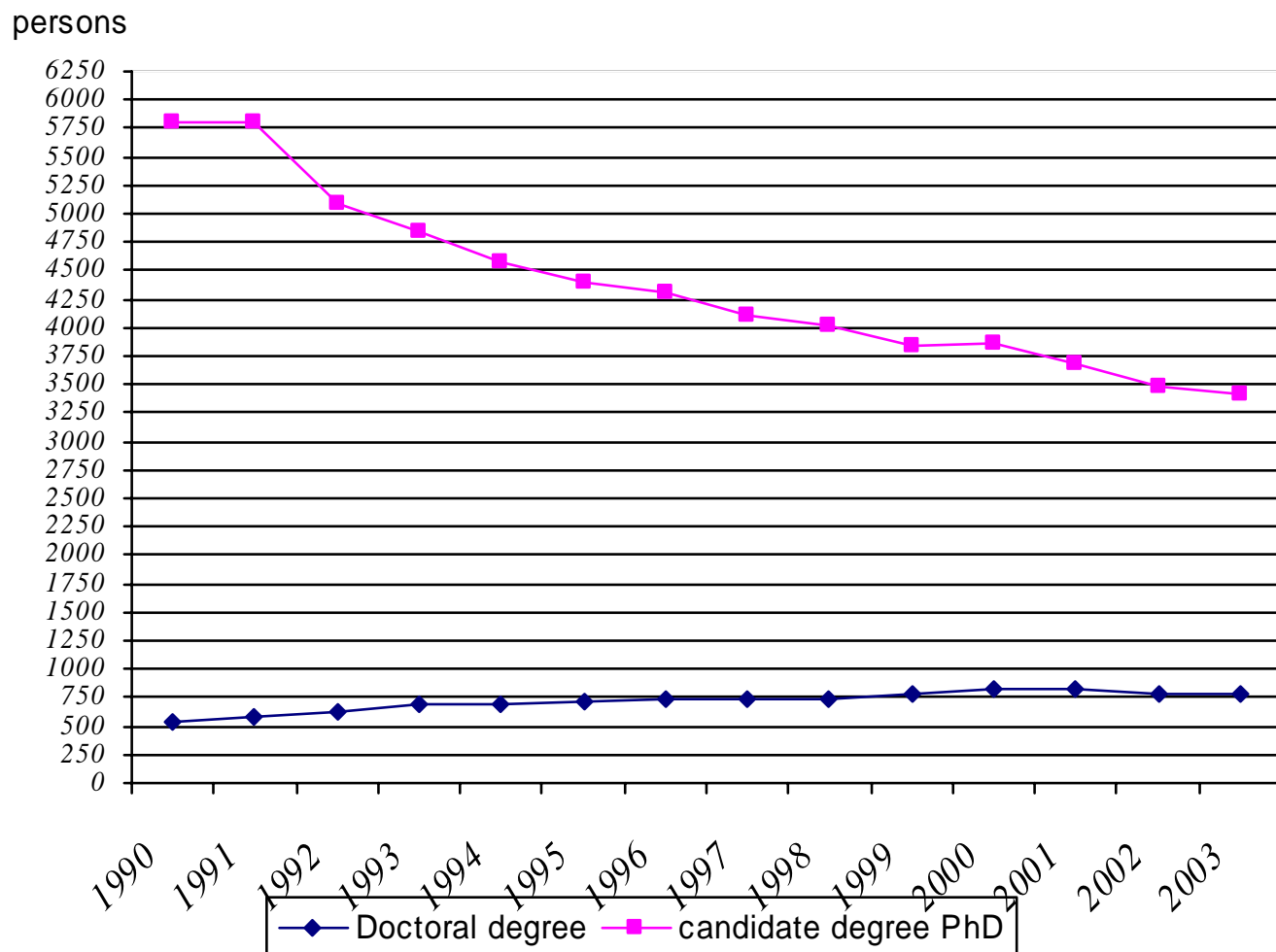
2005



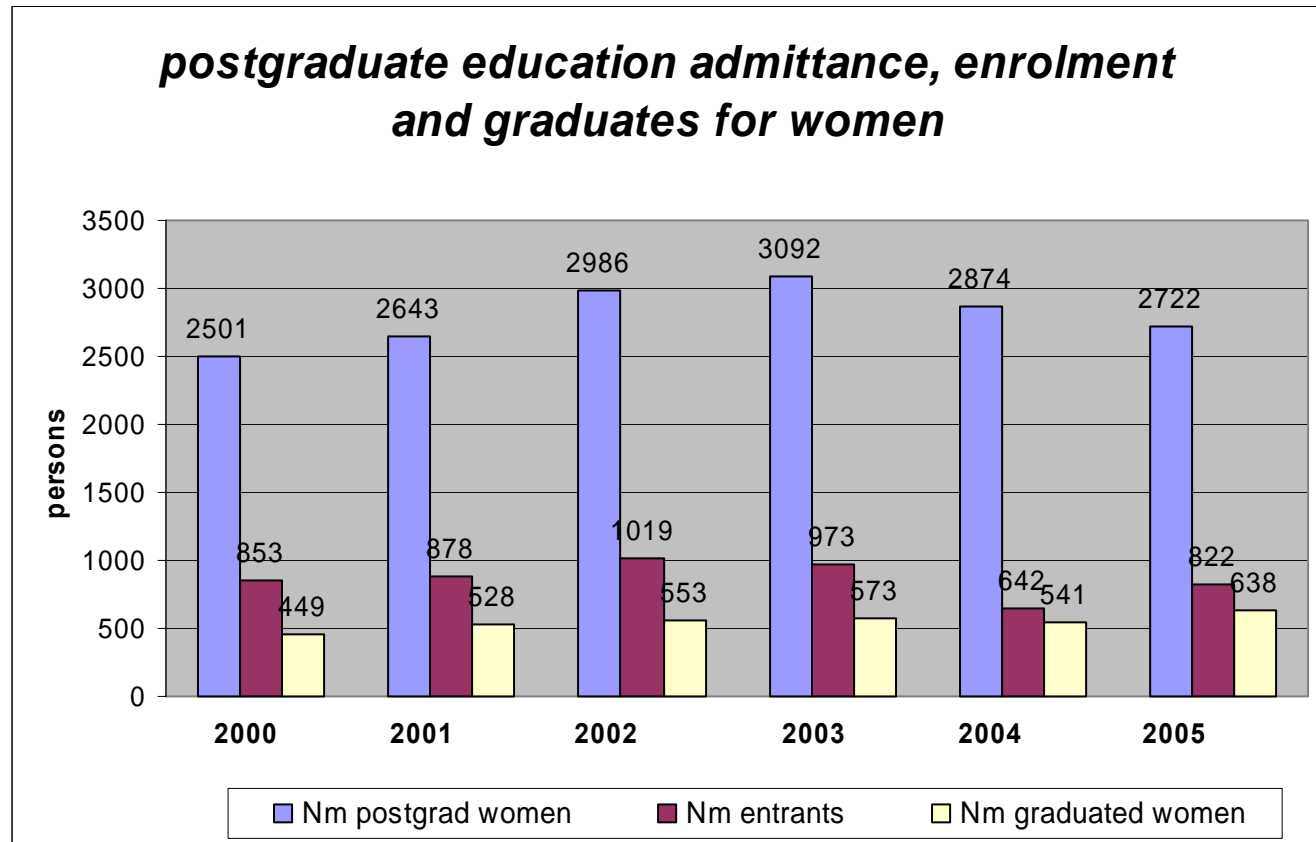
Structure of current domestic expenditure on scientific R&D, by type of activity



Personal: dynamics of high educated researchers in R&D sphere



PERSONAL TRAINING: statistics of postgraduate education



Scientific-Innovative line

